

CRITERION 7- Institutional Values and Best Practices

Key Indicator- 7.1 Institutional Values and Social Responsibilities

7.1.2 Alternate Sources of Energy, Types of Degradable and Non-Degradable Waste, Water Conservation, Green Campus Initiatives, Disabled Friendly Environment



SHISHURAM DAS COLLEGE

Bhusna (Near Sarisha), South 24 Parganas, West Bengal- 743368

W. Maiti
Principal
Shishuram Das College
Bhusna, Kamarpole, S. 24 Pgs.

ENERGY EFFICIENT EQUIPMENTS

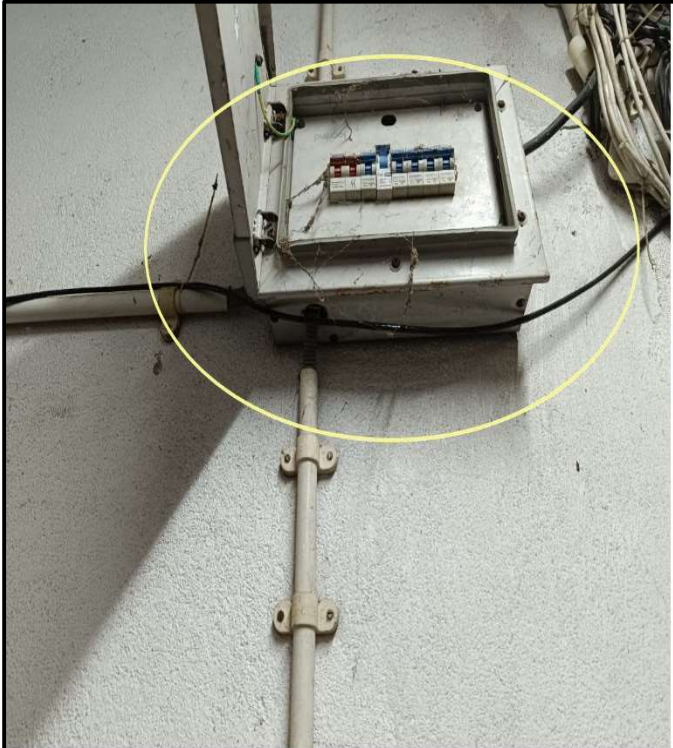
Shishuram Das College is committed to sustainability and reducing its carbon footprint by implementing various energy-efficient practices. The college has replaced traditional lighting with LED tubes and bulbs across the campus. These LED lights consume significantly less electricity compared to conventional lighting, resulting in lower energy bills and a reduction in greenhouse gas emissions.

Additionally, the college conducts regular maintenance to ensure all lighting fixtures operate at maximum efficiency. They also promote awareness among students and staff about the benefits of energy conservation and encourage responsible usage of electrical devices. Through these initiatives, Shishuram Das College aims to create a greener, more environmentally friendly campus.



LED tubes and bulbs in use

MCVs OUTSIDE DIFFERENT ROOMS TO SAVE ELECTRICITY



SWITCHING OFF PRACTICE

Shishuram Das College actively promotes energy conservation through its "Switching Off" practice. Our students are well aware of the importance of saving electricity and diligently switch off lights and electrical devices after classes. The college reinforces this practice by placing posters around the campus to remind everyone of the significance of turning off unused equipment. Through these efforts, we foster a culture of responsibility and environmental consciousness among our students and staff, contributing to a more sustainable and energy-efficient campus.



DISPOSAL OF WASTE

Our college adopted several strategies for proper disposal of solid wastes within the campus. The college employed two different color-coded dustbins at various places (such as in front of canteen, in the student's common room, in the staff room, office, principal's room) within the premise of the

Green litter bin: These litterbins are used for disposal of bio-degradable wastages (mainly wet wastes) i.e. the leaves, twigs, vegetable waste, fruit waste, food waste. The college has the plan to obtain a program of reuse these bio-degradable wastes as dirt compost in future.

Blue litter bin: These litterbins are used for disposal of degradable wastage (mainly dry wastes) in the form of paper waste i.e. news-paper pages, magazine, light paper, paper board carton, out of them some are used for decorations, remaining wastes are dumped into municipal garbage vehicle or at nearby garbage compactor machine.

Non-recyclable wastes which are collected from classroom, staff room, office etc. are transferred to municipal garbage vehicle on the regular basis.



Students are cleaning campus

WATER CONSERVATION

Shishuram Das College has integrated sensor-based water pumps as a crucial part of its water conservation efforts. These advanced pumps are equipped with sensors that monitor and regulate water flow based on real-time needs. This technology ensures that water is used efficiently by adjusting the flow according to demand, which significantly reduces wastage.

The system continuously gathers data on water levels and flow rates, allowing it to make automatic adjustments to prevent overuse. This automated operation minimizes the need for manual intervention and helps prevent unnecessary water pumping. Additionally, the sensors can detect leaks or irregularities, enabling prompt maintenance and reducing water loss.

The implementation of these pumps not only conserves water and energy but also supports the college's broader sustainability goals. By integrating this technology, the college enhances its resource management and reduces its environmental footprint. Furthermore, the use of sensor-based water pumps serves as a practical example for students, demonstrating how technology can address environmental challenges and promoting a culture of innovation and awareness.

GREEN CAMPUS INITIATIVES

Shishuram Das College is committed to creating a clean and sustainable campus by instilling a strong sense of environmental responsibility among its students and promoting the efficient use of resources. The college emphasizes the importance of a positive attitude towards nature and actively supports green initiatives. The Eco Club plays a crucial role in this mission, encouraging students to engage in tree planting, adopt eco-friendly practices, and participate in awareness programs focused on environmental conservation.



Forest Week Celebration 2021

PLACARD WRITING AND SEED BALL PREPARATION

Shishuram Das College engages in environmentally conscious activities such as creating placards and preparing seed balls. Placards are used to raise awareness about environmental issues and promote sustainability practices across the campus. These seed balls, a mix of seeds, clay, and compost, are designed to be scattered in various areas to encourage natural growth and green up the campus. These activities are integral to the college's commitment to environmental stewardship and sustainability.



Students are writing placards & preparing seed balls

PLANTATION OF TREES AS A PART OF FOREST WEEK 2022



DISABLED-FRIENDLY, BARRIER FREE ENVIRONMENT

Shishuram Das College is dedicated to creating a disabled-friendly and barrier-free environment that ensures all students have equal access to education. The campus is designed to accommodate the needs of students with disabilities, including features such as railing of stairs, and accessible restrooms.

Additionally, the college supports inclusive education by providing resources such as Braille materials and adaptive technologies. This enables students who are visually impaired to fully participate in their academic activities and benefit from an inclusive learning environment. By prioritizing accessibility and inclusivity, Shishuram Das College fosters a supportive and equitable educational experience

